

## Wendish Heritage Society DNA testing for Genealogy

# my FTDNA

Family Tree DNA, founded in 2000, was the first company to develop commercial applications for genetic genealogy. More than a decade later, FTDNA continues to lead this rapidly growing field and maintains the largest DNA database worldwide! We currently have over 404,000 individual DNA records!

FTDNA is associated with leading authorities in the fields of genetics and anthropology, and is the chosen DNA testing facility for the National Geographic Society's Genographic Project. With our renowned scientist, FTDNA continuously offers the latest technological breakthroughs in genetic genealogy.

This is why 9 out of 10 genealogists choose Family Tree DNA!

FTDNA has also developed a network for members to learn more about their DNA results and take an active role in the on-going research. With >7300 DNA Projects that focus on a wide range of surnames or geographical regions, there are many ways to get involved! A few of our projects that may interest you are:

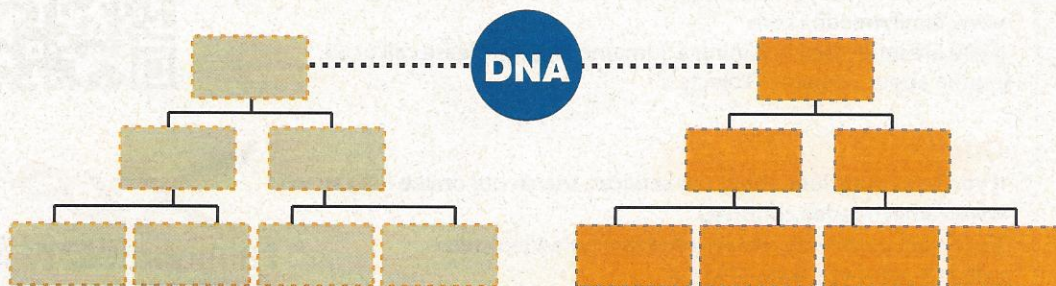
Allen	Dunbar	Hercus	Neville
Arcus	Dundas	Herring	Nisbet
Barr	Edgar	Holland	Strickland
Blackadder	Gillespie	Knox	Wales
Cockburn	Greenlaw	Langley	Washington
Corbett	Grey	Matheson	Wilson


### Family Tree DNA Allows You To:

- Prove or disprove a research theory
- Establish NEW relationships with distant cousins
- Confirm suspected relationships in your family tree
- Find percentages of your ethnic makeup (Family Finder only)
- Find other people who share your surname line (Y-DNA only)
- Determine the deep ancestral origins of specific family lines (Y-DNA & mtDNA)
- Network with confirmed genetic cousins and share your genealogical records

### Could these be two branches of the same family?

DNA can answer this question when there's no paper trail!

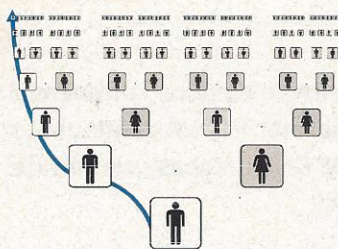


  
**FamilyTreeDNA**  
 HISTORY UNEARTHED DAILY

# ORDER A DNA TEST

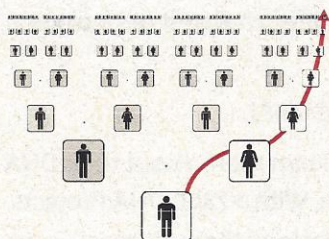
## Find the test that's right for you!

Family Tree DNA offers 3 test types. Each test looks at a different type of DNA, so each will give you different information about your ancestry. To ensure you choose the test that's right for you, read the descriptions carefully and contact us if you have any questions.



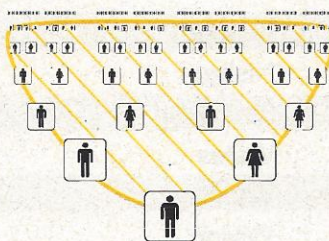
### Y-DNA (paternal line)

Only males may take this test. Discover the origin of your surname line (your father's father's father, etc.) and find out about its deep ancestral origin. Connect with genetic cousins who shared a father along this line and who may even share your surname. Find out if this line is European, African, Native American, Jewish, etc.



### mtDNA (maternal line)

Males and females may take this test. An mtDNA test will reveal the deep ancestral origin of your direct maternal line (your mother's, mother's mother, etc.). See the migration of your ancient maternal ancestors and connect with genetic cousins who shared a mother along this line. Find out if this line was European, African, Native American, Jewish, etc.



### Family Finder

Males and females may take this test. Family Finder uses autosomal DNA (inherited from your mother and father, all four grandparents, eight great-grandparents, etc.) to provide you a breakdown of your ethnic percentages. Find out if you have detectable percentages of European, African, Native American, Middle Eastern, Jewish, etc. Family Finder allows you to find cousins across any of your ancestral lines who shared an ancestor with you within the last 5 generations.

Family Tree DNA makes results available to our customers electronically. When you order, a personal page is created and an e-mail is sent with your password, so that you can track the progress of your test. When the lab completes a test, we upload the results to our database and notify you via e-mail that the results are available online. You can print your certificate and initial report from your personal page. We recommend you periodically log into your page to check for updates.

### Order Now

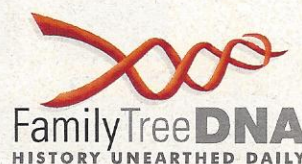
Start your genetic journey today! You can: Fill out and mail this form, scan the code with your smart phone or order online at: [www.familytreedna.com](http://www.familytreedna.com)

If you are interested in joining a Surname Project, please call us to inquire about Surname Projects.

### Questions?

If you have questions about our services, search our online FAQ at: [www.familytreedna.com/FAQ](http://www.familytreedna.com/FAQ)

To contact us directly, email: [info@familytreedna.com](mailto:info@familytreedna.com)  
call: 713-868-1438, 8AM-5PM CT



**Address**  
Please include shipping: \$4.00 (inside the USA), \$6.00 (outside the USA)

**Payment:**  
 Check  
 Credit Card

**Payment:**  
 Mastercard  
 Visa  
 AMEX

**Phone number**      **Expiration**      **CVC (Required)**

**Name on Card**      **Card Number**

**First Name**      **Last Name**      **Surname Project**

**City**      **State**      **Zip**      **Email Address**

Please mail to Family Tree DNA - Genealogy by Genetics Ltd., 1445 North Loop West, Suite 820 Houston, TX 77008, USA

- Y DNA 37 (\$129) \$169-
- Y DNA 67 (\$209) \$268-
- mtDNA PLUS (\$139) \$159-
- mtDNA FMS (\$209) \$299-
- Family Finder (\$209) \$289-

Coupon Code: Wendish2013  
Prices Expire: 5/21/2013

This test is for a:

- Male
- Female